

Create a Fantasy Chair

BY JEAN BERNARD

Jean Bernard is a talented doll sculptor who creates many different items from polymer clay. She creates these fabulous fantasy chairs that showcase her lovely dolls and fairies. -Editor

Supplies

- Aves Apoxie Sculpt - White
- Sculpting Tools
- Paint Brushes
- Sanding Sponges
- Cardboard
- 18 Gauge Wire
- Scotch Tape
- Small Crafter's Level
- Foil & Sheets of Wire Mesh
- Gold Yarn, Q-Tips, Cotton Balls
- DecoArt Acrylic Paint: Emperor's Gold Metallics
- Multi Twinkles Brush on Glitter, Lamp (Ebony) Black, Gloss/Brilliant Dura Clear Varnish, CeleryGreen and Clover
- Water, Shallow Bowl, Cloths & Apron

Aves Apoxie Sculpt is a two part non-toxic air dry Apoxie. Equal parts of A & B are blended together. I suggest you work in small amounts until you become familiar with the medium. A nickel-size ball should allow you to become familiar with its properties. The Aves Apoxie Sculpt has a working time of approximately three hours at which point the product begins to "set up". I encourage those of you that have not used the Apoxie to perform a "stress test". This will demonstrate the strengths in various thicknesses and will help you as you build your pieces. Make 1" x 1" squares of various thicknesses. Let the test pieces dry overnight. Once they are completely hard, try to snap the squares with your fingers, pound with a hammer or anything else to gauge the durability of each test piece.

I do not recommend any particular type of tool to use on the Apoxie. My primary sculpting tools are my fingers, but any type of tool or item you want to use that works is good. I would not use the same sculpting tools that you use on polymer clay, as the Apoxie can stick to them and must be cleaned off with sandpaper or acetone.

Prepare your work surface by using a clean tile that is 16" x 16" or use a sheet of foil and cover cardboard. Use an apron to protect your clothes and keep a cloth near for cleaning hands. You can use wet-wipes for cleaning your hands. The chair in this demonstration is 19" tall. I will give instructions, but you can make your chair any size that you would like.

Step 1 - Cut a piece of cardboard in the desired size for your chair. Use a leather needle to punch through the cardboard at all four corners. Insert 18 gauge wire through the holes for the legs. The wires on the back will be longer due to the size of the chair back. Use scotch tape to secure the wires to the chair seat, top and bottom (the wires will be loose). Use the level at this time and make any adjustments needed.

Step 2 - Mix equal parts of A & B and with damp fingers flatten strips. Apply to the tops and bottoms of the chair corners. Wrap it around the wire as you go. Allow this to set up and it will provide stability to the wire legs. Add a thin layer of Apoxie onto the seat top and bottom. Allow this to harden.



Helpful Hint: The Apoxie will get tacky to the touch. Simply wet your fingers and the Apoxie with water and continue blending. Water will not jeopardize the durability of the Apoxie.

Step 3 - Cut five tall leaves using mesh for the back of the chair and two shorter leaves for the arms. After you cut them, loosely set them on the chair and see if you like the design. Once you like the placement, manipulate the mesh to resemble real leaves by bending and curling the tips and edges. Create a natural look.



Step 4 - Note the branch under the seat between the two front legs. I place a branch like this on all four corners for stability and it also adds a decorative touch. Cut foil and crumble to resemble a branch. Roll out a length of Apoxie sculpt the same length as the foil and cover the foil. Don't smooth too much, but let it resemble a real branch. Press them into place.



Step 5 - Cover the entire chair with a thin layer of the Apoxie. Work in small sections. I cover the back and let it set up before moving to the front. Once it is hard you can sand any rough areas. When it is in the wet stage, it acts as glue, binding the parts together.



Step 6 - Now comes the fun "embellishment" part! Make berries, branches and leaves and add them as nature would in twisting and turning designs. To make leaves, shape a diamond out of the Apoxie. Apply the leaves to the desired area and use a sculpting tool or toothpick dipped into water to indent the center of the leaf, leaving a "vein". Apply branches and leaves. Then roll small balls in various sizes and apply onto the leaves. Helpful Hint: As you embellish the chair, think of the construction aspects. Apply the embellishments in the weak areas of

the chair such as corners, separated leaves and tips of leaves that may be thin.



Step 7 - Paint the entire chair with two coats of the DecoArt Emperors Gold Acrylic Paint. You can even paint the Apoxie while it is still wet.



Step 8 - Apply a "wash" to the branches, leaves and berries with Lamp Black and 1/3 water. Use a paint brush to dab the wash onto the areas for highlights. Quickly wipe away most of the wash with a Q-Tip or cotton ball. Continue until all the branches leaves and berries are covered with wash and wiped back. You can



apply a second wash and again wipe back. It will really make the piece "pop" with highlights. Next use the Celery Green and Clover acrylic paints separately. Apply to the nooks and crevices of the branches,



leaves and berries. Remove immediately with cotton balls. This gives the piece an "ages old" feel.

Step 9 - Apply three coats of Multi Twinkles to the berries. This will add sparkles and focal points to the finish. **Step 10** - There are three ornaments hanging from this chair. Once the chair is done, I decide where something is needed for balance. I made



round cone shapes from cardboard and then covered them with a thin layer of Apoxie. Make any shapes you want and add some berries. Use gold yarn in various lengths and apply a berry with leaves to a knot tied at the end. When hard, use the same techniques to add gold, washes and Twinkles.



Helpful Hint: Hang each strand of yarn/berry on a clothes hanger fixed with a clothespin. Suspending these will help them dry without getting messed up.

Step 11 - I use 7 strands of yarn per ornament. Knot the end of the yarns and cover with Apoxie. Tie a yarn into the top of the cone shape for hanging. Insert the soft Apoxie into the inside of the cone to attach. Paint the ball the same as the other pieces. Suspend from the tips of chair leaves with Apoxie and berries. I prop something under the decoration until the Apoxie is hard. Then again, paint to match. Seal the entire chair with two coats of DuraClear Gloss/Brilliant Varnish.

Sources: Apoxie Sculpt from Aves Studios, 800-261-2837. Other products from your hobby store. Address correspondence to Jean Bernard, 8200 Offenhauser Dr. #123E, Reno, NV 88951. Please include a stamped, self-addressed envelope for a reply or email: Jean@bernard-dolls.com. ❖

Fantasy becomes Reality...

AVES®

Manufacturers of Fine Clays & Maches

1-800-261-2837

P.O. Box 344, River Falls, WI 54022

Imagine, all the possibilities...

• **Doll, Toy, Teddy & Antique Repairs.**

• **Customize/Fabricate: Fantasy Chairs, scenery, parts & props.**

• **Sculpt your own clothing, accessories, pedestals/bases...etc.**

• **Repair crazed eyes, egg shell cracking, seams, gaps, holes, fingers, toes... & more!**

• **Attach: Beads, gems, crystals, sequins...more!**

Adheres to:

Ceramic, Porcelain, Wood, Polymers, Foam, Plastics, Mache, Glass, Metal...and more!



Fantasy Chair, by Jean Bernard
Created with Apoxie® Sculpt

- Non-toxic
- No heat required
- 0% Shrinkage
- Superior Strength
- Incredible Detail
- Great Adhesion
- Waterproof
- Paint wet or dry
- Sand, file, drill, tap, tool, grind, without chipping, cracking or flaking!
- Fun & Easy to Use!

Ask your Hobby Shop to carry Aves® Products!

* Try our Apoxie® products! Available in many sizes and colors. Visit our website for more information...e-mail us with any questions.

www.avesstudio.com

Masterpiece Eye Co., Inc.

<http://www.SoftGlassEyes.com>

Still beautifully handmade.

Sizes 4/5 mm through 32 mm.

33 Standard colors.

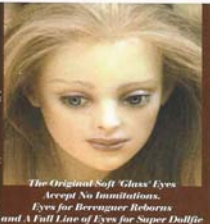
Unlimited Customs.

Metallics, Pastels

Toll Free:

1-866-212-1273

An original Masterpiece by Eveline Frings of Germany



The Original Soft 'Glass' Eyes

Accept No Imitations.

Eyes for Berenguer Reborns

and A Full Line of Eyes for Super Dollfie